

Appendix 4 – Dynamics of BUASVMT students' enrollment

Total number of students enrolled in the university

Full-time study programs

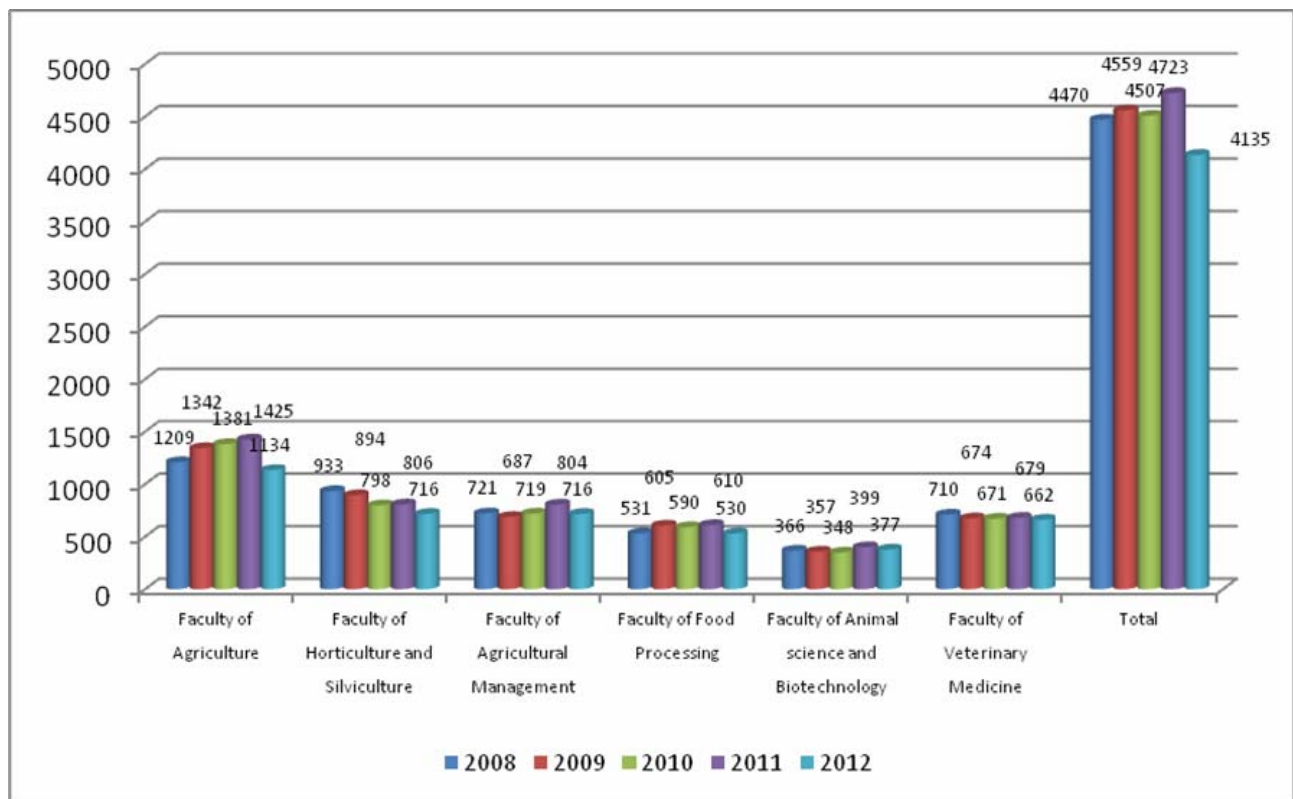
	2005-2006	2006-2007	2007-2008	2008-2009	2009-2010	2010-2011	2011-2012
Bachelor degree	4493	4221	3916	3872	3376	3387	3191
Master degree	367	474	554	687	1131	1236	944

Distance learning study programs

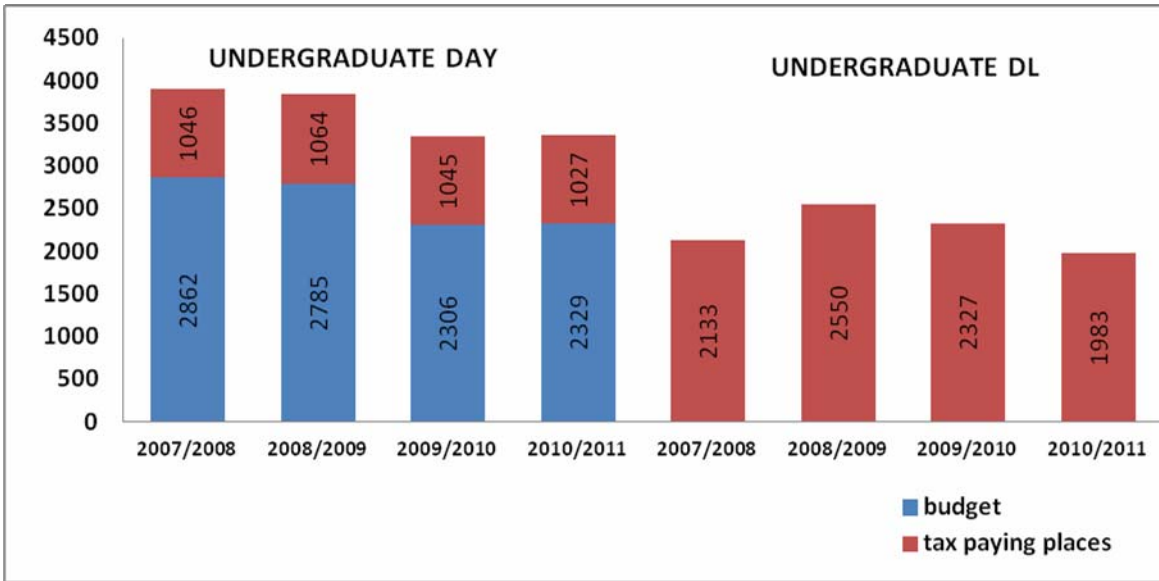
	2005-2006	2006-2007	2007-2008	2008-2009	2009-2010	2010-2011	2011-2012
Bachelor degree	1717	1930	2165	2551	2406	2013	1695

Number of students enrolled in the first year

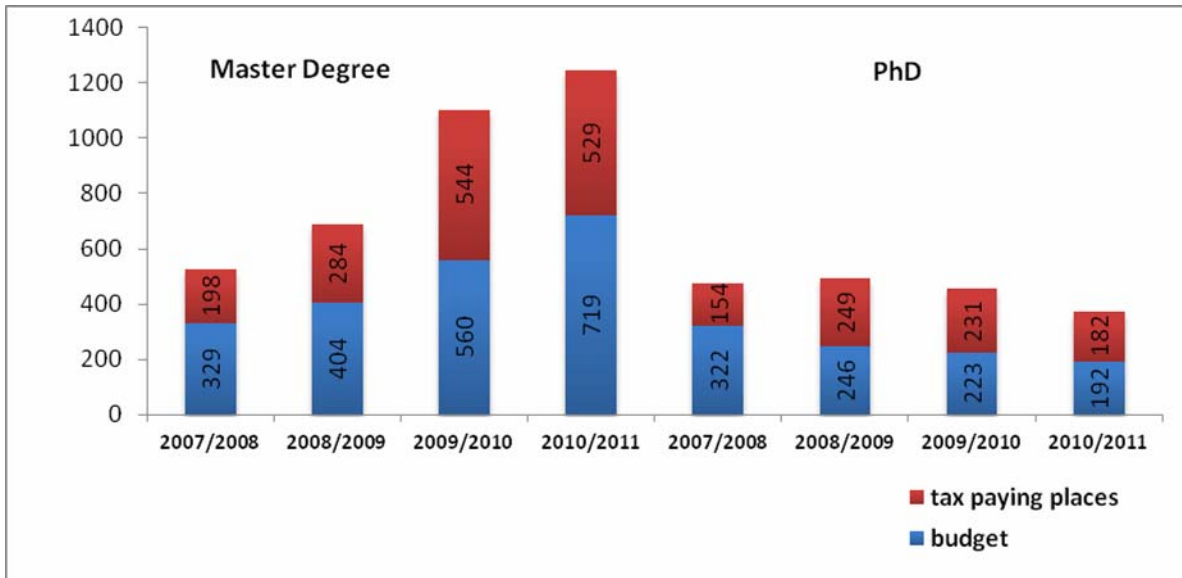
	Bachelor degree					
	Budgetary scholarships			Self funding places		
	Full-time study programs	Part-time study programs	Distance learning study programs	Full-time study programs	Part-time study programs	Distance learning study programs
2005-2006	611	0	0	468	0	600
2006-2007	635	0	0	293	0	580
2007-2008	558	0	0	441	0	615
2008-2009	635	0	0	502	0	775
2009-2010	684	0	0	569	0	678
2010-2011	713	0	0	442	0	489
2011-2012	715	0	0	175	0	370



Total students number, per faculties



Evolution of the number of undergraduate students



Evolution of the number of postgraduate students (MSc - PhD)